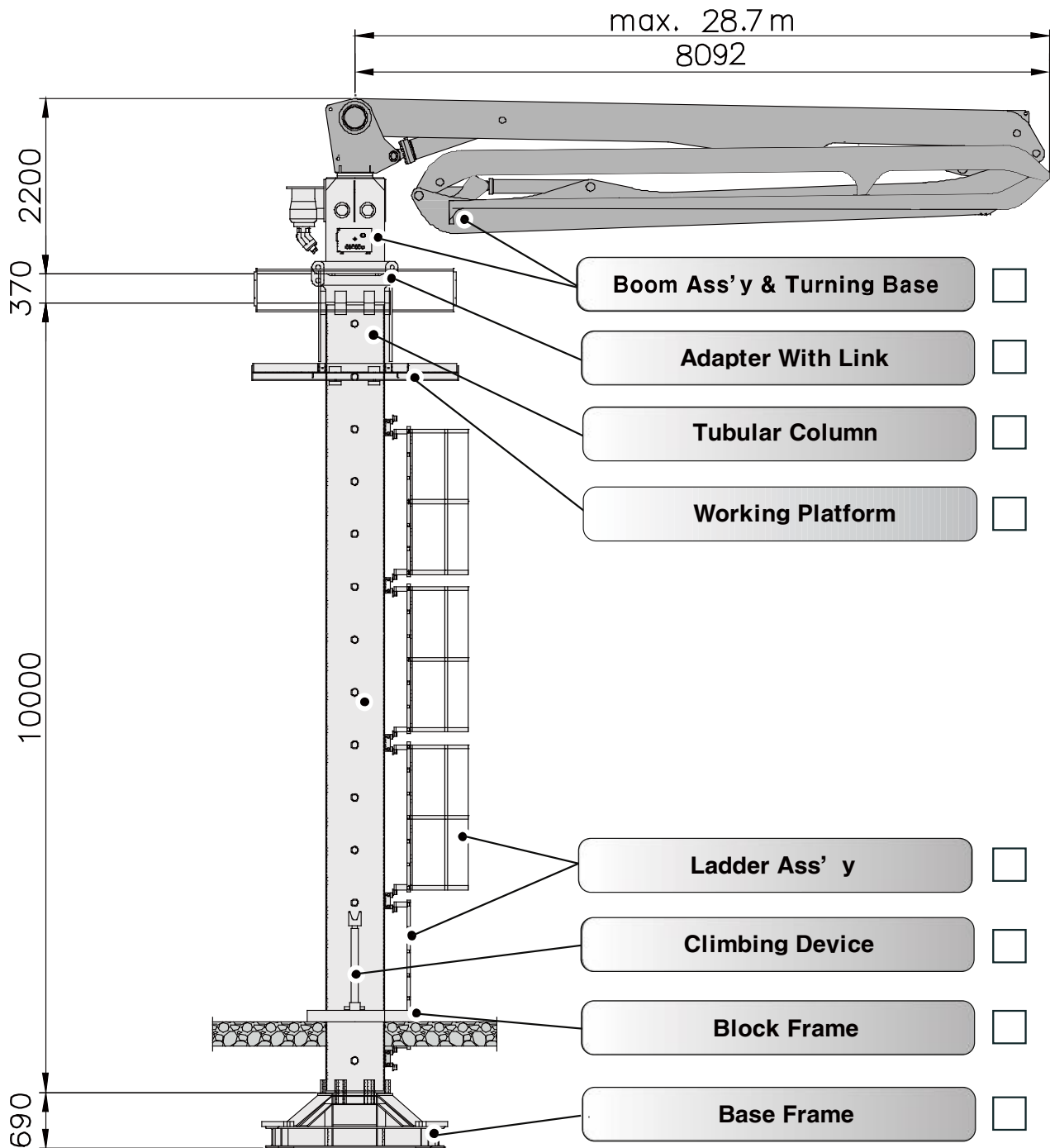


# JB-M29H

## DATA SHEET PLACING BOOM



Placing System on Tubular column Type 29M 4 Sections R & Fold designed Boom



# JB-M29H

## DATA SHEET PLACING BOOM



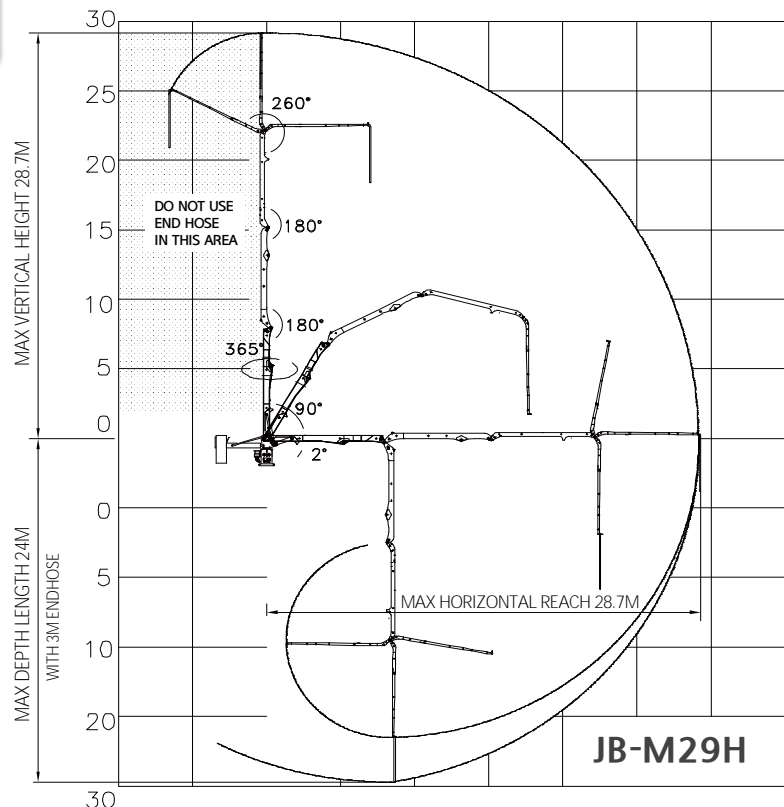
Placing System on Tubular column Type 29M 4 Sections R & Fold designed Boom

### Boom Specification / Technical Specification

SPECIFICATION		
Boom Design	R&Fold	
Horizontal Reach	28.7m	
Vertical Reach	28.7m	
Reach Depth	24.0m	
Boom Length	1st Section	8.0m
	2nd Section	7.0m
	3rd Section	7.0m
	4th Section	6.7m
End Hose Length	3.0m	

SPECIFICATION		
Boom Articulation	1st Section	-2°~90°
	2nd Section	180°
	3rd Section	180°
	4th Section	260°
Rotation	365°	
Delivery Line	DN 125mm(5")	
Electric System	AC380V / 60Hz	
Control Systems	Radio-Cable-Manual	

### WORKING DIAGRAM



# JB-M29H

## DATA SHEET

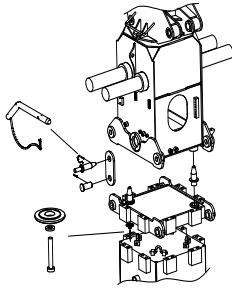
PLACING BOOM



Placing System on Tubular column Type 29M 4 Sections R & Fold designed Boom

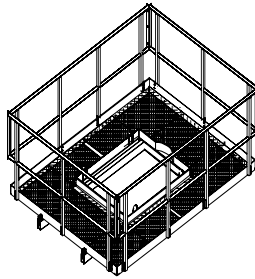
### Standard delivery Scope

#### ► Turning Base & Adapter



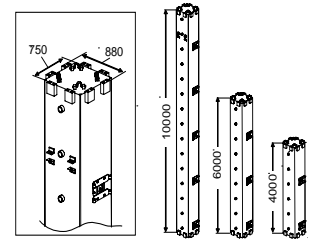
- Turing Base:1Set
- Adapter:1Set

#### ► Working Platform



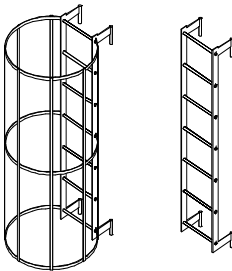
- Safety platform : 1Set

#### ► Tubular Column



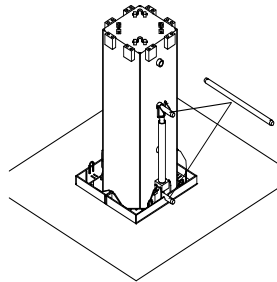
- 10m Tubular Column:2EA
- 4m,6m Tubular Column:options

#### ► Ladder



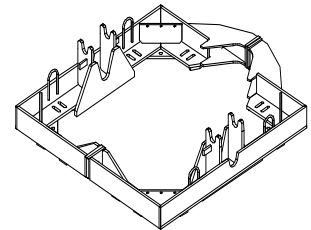
- Ladder with rear protection:3EA
- Ladder without protection:1EA

#### ► Climbing Device



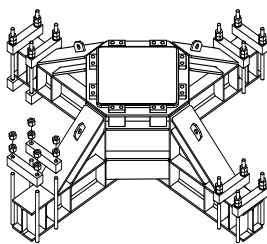
- Climbing Device:1Set

#### ► Block Frame



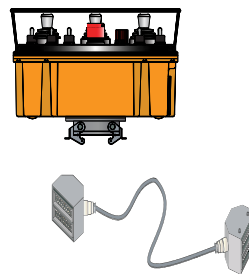
- Block Frame:3EA

#### ► Base Frame



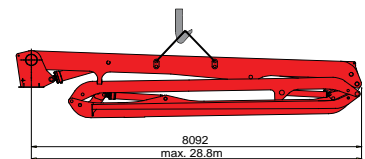
- Base Frame:1EA

#### ► Remote Control



- Cable Remote Control:1Set
- Wireless remote control(option)

#### ► Boom ass'y



4880Kg

# JB-M29H

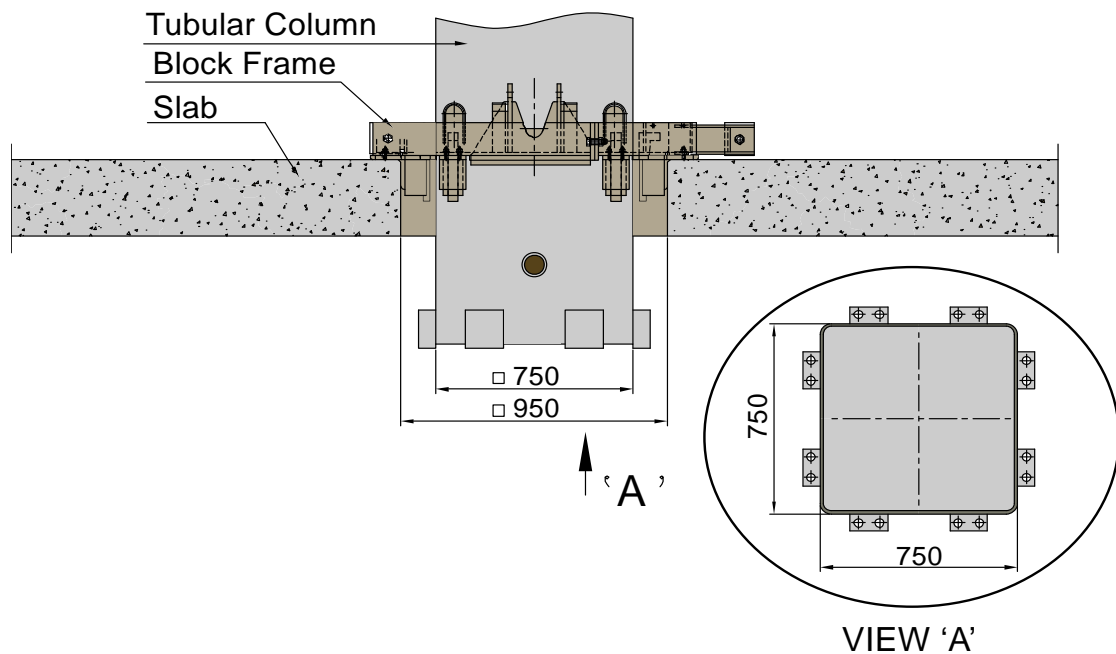
## DATA SHEET

PLACING BOOM

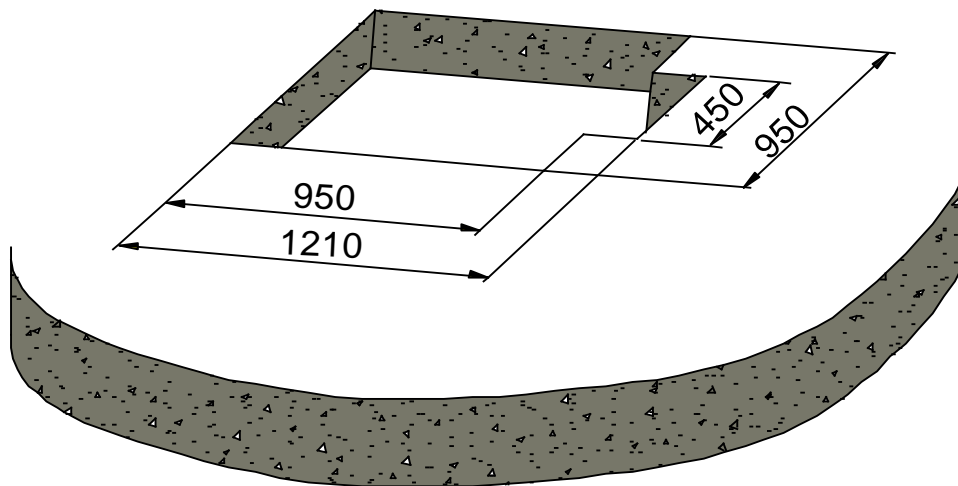


Placing System on Tubular column Type 29M 4 Sections R & Fold designed Boom

### How to support on Slab



### Slab Open Hole Size



# JB-M29H

## DATA SHEET

PLACING BOOM



Placing System on Tubular column Type 29M 4 Sections R &amp; Fold designed Boom

### WEIGHT LIST

NO.	NAME	EA/SET	KG/EA	TOTAL KG
1	BOOM ASS'Y	1	5130	5130
3	TURNING BASE ASS'Y	1	2320	2320
4	TUBULAR COLUMN (10m)	2	3356	6712
5	PLATFORM ASS'Y	1		358
1)	PLATFORM	1	250	250
2)	SUPPORT FOR PLATFORM	2	20	40
3)	HANDLE RAIL (1)	2	18	36
4)	HANDLE RAIL (2)	2	16	32
6	LADDER ELEMENT SET	1		259
1)	LADDER (1)	3	44	132
2)	LADDER (2)	1	27	27
3)	LADDER BRACKET	10	10	100
7	BLOCK FRAME	3	335	1005
8	BASE FRAME	1	1420	1420
9	PIN ASS'Y FOR PLACING BOOM	1		45
1)	PIN (1) (LINK)	4	3.5	14
2)	PIN (2) (LINK)	4	4.5	18
3)	PIN (3) (ADAPTER)	2	4.5	9
4)	CLIP (LINK)	4	0.5	2
5)	COVER (ADAPTER)	2	1	2
10	PIN FOR LIFTING CYL	3	40	120
11	PIN FOR LADDER	10	1.8	18
12	PIN FOR PLATFORM	4	1.5	6
13	LIFTING CYL	2	70	140
14	LINK & ADAPTER	1		450
1)	ADAPTER FOR MAST	1	370	370
2)	LINK	8	10	80
				<b>17,983</b>

\* All technical data are theoretical values and Specification are subject to change without prior notice.  
 \* www.junjin.com